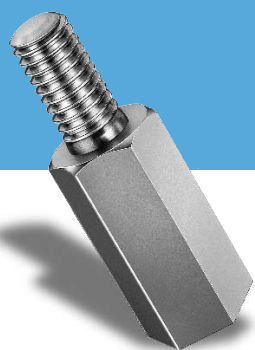




www.bossard.com



Stand-offs
Some distance ahead

BOSSARD

Stand-offs – ideal and easy to mount



Internal and external threads

Steel, copper or plastic

**Specially suited to the assembly
of circuit boards**

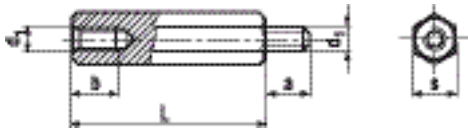
Stand-offs – standard items

Hexagon stand-offs with internal and external thread

- **BN 3318**
Steel, zinc plated
- **BN 3321**
Brass, nickel plated

d_1	M2	M3	M4
b min.	$L \leq 8 : 2$	$L \leq 8 : 2,5$	$L \leq 10 : 2,5$
b	$L > 8 : 5$	$L > 8 : 6$	$L > 10 : 7$
s h11	4	5,5	7
$a \pm 0,2$	4	5	6

d_1	M5	M6
b min.	$L \leq 12 : 3$	$L \leq 14 : 3$
b	$L > 12 : 9$	$L > 14 : 11$
s h11	8	10
$a \pm 0,2$	8	10

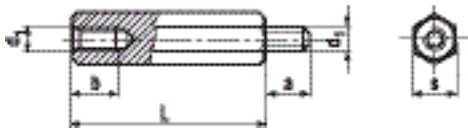


d_1	M2	M3	M4	M5	M6
5	●	●●	●●		
6	●	●●	●●		
8	●	●●	●●	●	●
10	●	●●	●●	●	●
12	●	●●	●●	●	●
14		●●	●●	●	●
16		●●	●●	●	●
18		●●	●●	●	●
20		●●	●●	●	●
25		●●	●●	●	●
30		●●	●●	●	●
35		●●	●●	●	●
40		●●	●●	●	●
45		●●	●●	●	●
50		●●	●●	●	●
55		●●	●●	●	●
60		●●	●●	●	●
70				●	●
80				●	●
100					●

Hexagon stand-offs with internal and external thread

- **BN 7375**
PA (Polyamide)
GV, black
electrically insulating

d_1	M3	M4
b min.	$L \leq 10 : 6$	$L \leq 10 : 8$
b	$L > 10 : 10$	$L > 10 : 10$
s	6	8
a	8	8



d_1	M3	M4
8	●	
10	●	●
12	●	●
15	●	●
18	●	●
20	●	●
25	●	●
30	●	●
35	●	●
40	●	●
45	●	●
50	●	●

Round spacers

- **BN 5281**
PA (Polyamide) 6.6, white

d_1	2,6	3,1	4,2	5,2	6,2	8,2	10,3
d_2	5	6	8	10	10	12	15



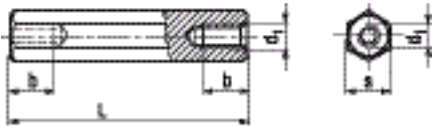
d_1	2,6	3,1	4,2	5,2	6,2	8,2	10,3
2	●						
3	●	●	●	●	●	●	●
5	●	●	●	●	●	●	●
7,5	●	●	●	●	●	●	●
10	●	●	●	●	●	●	●
15	●	●	●	●	●	●	●
20	●	●	●	●	●	●	●
25	●	●	●	●	●	●	●
30		●	●	●	●	●	●

Hexagon stand-offs with internal thread on both sides

- **BN 3319**
Steel, zinc plated

d_i	M3	M4
fully threaded	$L < 20$	$L < 25$
b	$L \geq 20 : 7$	$L \geq 25 : 9$
s h11	5,5	7

d_i	M5	M6
fully threaded	$L < 30$	$L < 35$
b	$L \geq 30 : 11$	$L \geq 35 : 14$
s h11	8	10



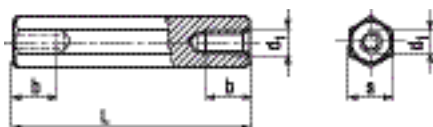
d_i	M3	M4	M5	M6
5	●			
6	●	●		
8	●	●	●	
10	●	●	●	●
12	●	●	●	●
(14)	●	●	●	●
16	●	●	●	●
(18)	●	●	●	●
20	●	●	●	●
25	●	●	●	●
30	●	●	●	●
35	●	●	●	●
40	●	●	●	●
45	●	●	●	●
50	●	●	●	●
55	●	●	●	●
60	●	●	●	●
70			●	●
80			●	●
100				●

Hexagon stand-offs with internal thread on both sides

- **BN 3320**
Brass, nickel plated

d_i	M2	M3
fully threaded	$L \leq 18$	$L \leq 20$
b	$L > 18 : 7$	$L > 20 : 7$
s	4	5,5

d_i	M4
fully threaded	$L \leq 30$
b	$L > 30 : 9$
s	7



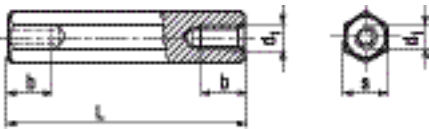
d_i	M2	M3	M4
5	●	●	●
6	●	●	●
8	●	●	●
10	●	●	●
12	●	●	●
14	●	●	●
16	●	●	●
18		●	●
20		●	●
25		●	●
30		●	●
35		●	●
40		●	●
45		●	●
50		●	●
60		●	●

Hexagon stand-offs with internal thread on both sides

- **BN 7372**
PA (Polyamide)
GV, black
electrically insulating

d_i	M2,5	M3
fully threaded	$L < 15$	$L < 18$
	$L = 15 : 7$	$L = 18 : 8,5$
b	$L = 18 : 8,5$	$L = 20 : 9,5$
	$L = 20 : 9,5$	$L > 20 : 10$
	$L > 20 : 10$	
s	5	6

d_i	M4	M5
fully threaded	$L < 25$	$L < 25$
	$L > 25 : 10$	
b	$L \geq 25 : 10$	
	$L \geq 25 : 10$	
s	8	10

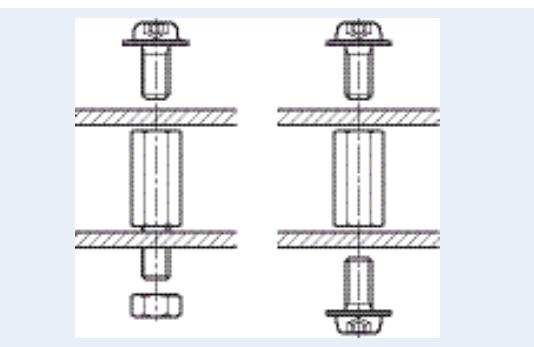


d_i	M2,5	M3	M4	M5
5	●			
6		●		
8	●			
10	●	●	●	●
12	●	●		
15	●	●	●	●
18	●	●	●	●
20	●	●	●	●
25		●	●	
30		●	●	●
35		●		●
40		●	●	●
45		●		●
50		●	●	●



Custom-made models

Stand offs and spacers according to customers' drawings can be delivered within a short time.



Tip for fixing circuits boards

The combination of stand offs with eco-fix® screws gives a vibration-proof assembly.

Oversize hole tolerances can easily be covered.

Selection criteria

	Material / surfaces	Properties
Stand offs	steel, blue zinc plated	– electrically conductive
	copper, nickel plated	– electrically conductive
	plastic	– non-magnetic
	PA (Polyamide) GV, black	– electrically insulating
Spacer rounds	PA (Polyamide) 6.6, white	– max temperature around 110° C
	plastic	– electrically insulating
	PA (Polyamide) 6.6, white	– max temperature around 80° C

